

Produced by

Psion Digital  
Limited

Psion Technical Support

Contacts: [www.pSION.com/international](http://www.pSION.com/international)  
Knowledgebase: [www.pSION.com/support](http://www.pSION.com/support)

---

# Connecting the Psion Series 5, 5mx, 7 and Revo with Nokia Infrared mobile phones

**Note:** All occurrences of **Revo** in this document also refer to **Revo Plus** unless otherwise specified.

This document is a step by step guide to connecting your Series 5, 5mx, 7 or Revo to your Nokia phone for email, faxing (not Revo), SMS (not Series 5) or web browsing.

Furthermore, this document assumes that if you are using a Series 5, you have Message Suite v1.5x installed. The latest version is v1.52 and we strongly recommend that this version be installed.

You can obtain the latest version of Message Suite from the Psion web site ([www.pSION.com](http://www.pSION.com)) or install it from the PsiWin 2.2 (or higher) CD.

## Which phones can be used?

At the time of writing, phones that are known to work are:

- 7110
- 8210
- 8810, 8850

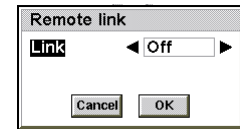
## Setting up the mobile phone

1. Check that your Subscriber Identity Module (SIM) card is enabled for data and fax. If you are unsure about this, contact your network provider, who will be able to enable your SIM, if necessary.
2. If necessary, activate the Infrared port on the mobile phone. See your phone's documentation for details on this.
3. Position the phone and your Psion so that the Infrared ports line up at a distance of between 5 to 15cm
4. For best results, your phone needs to be displaying good signal strength. This will be dependent on your cellular provider having good coverage in your area. Failure to have a good signal strength may lead to intermittent dropped calls. A wireless connection is liable to open air effects, which means that any call over GSM will not be as reliable or as fast as a land line to cable modem setup.

# Setting up the Psion

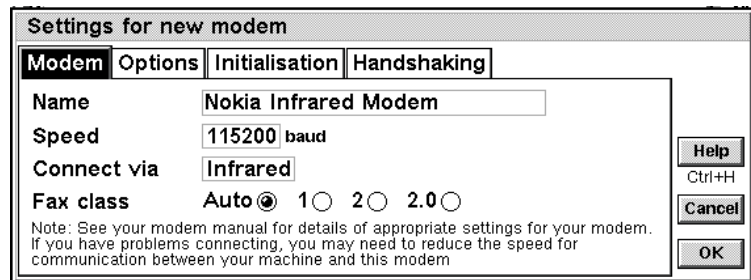
## Series 5

1. Check that the Remote link is switched off on the Psion. On the System screen and press **Ctrl + L** or select **Remote Link** from the Tools menu, set the **Link** line to **Off** and press **Enter** or tap the **OK** button.



2. Press **Ctrl + S** or tap the **Control Panel** button and double-tap the **Modems** icon. Then tap the **New** button.

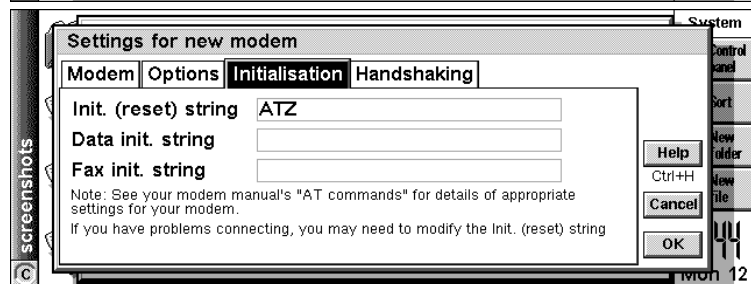
3. On the **Modem** page, tap the **Name** line and type in a name for the modem. Set the **Speed** line to **115200** baud, the **Connect via** line to **Infrared** and the **Fax class** line to **Auto**.



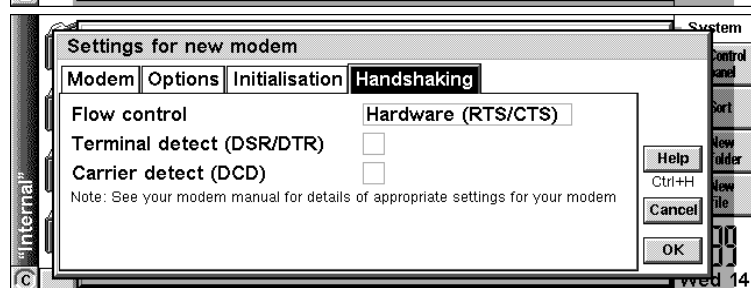
4. On the **Options** page, set the **Loudspeaker in use** line to **Never**, the **Volume** line to **Quiet** and the **Pause time for “,”** line to **4** seconds.



5. On the **Initialisation** page, set the **Init. (reset) string** line to **ATZ** and leave the other two lines blank.



6. On the **Handshaking** page, set the **Flow control** line to **Hardware (RTS/CTS)** and ensure that the other two lines are unticked then tap the **OK** button. Tap the **OK** button to return to the Control panel.



7. Double-tap the **Dialling** icon and on the **Location details** page, set the **Current location** line to **Mobile**. Then tap the **OK** button.
8. Follow the **Setting up Message Suite** support document to setup your Internet Service Provider (ISP) and email account details.

## Series 5mx, 7 and Revo

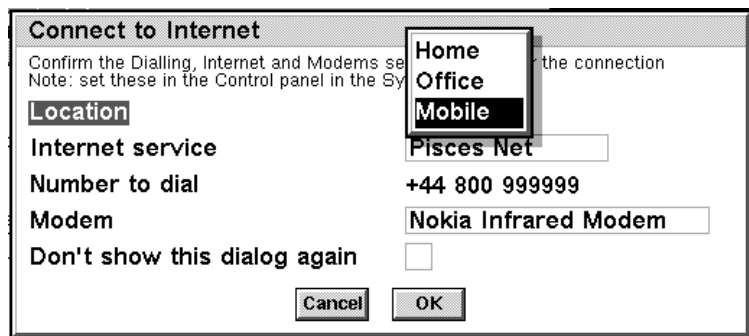
1. On the System screen, press **Ctrl + S** or tap the **Control Panel** button and double-tap the **Modems** icon. Set the **Current modem** line to **Infrared mobile phone** and tap the **OK** button.
2. Double-tap the **Dialling** icon and on the **Location** page, set the **Current location** line to **Mobile** then tap the **OK** button,
3. Follow the **Setting up Web, Email, Fax and SMS** support document to setup your ISP and email account details.

**Note:** If you have problems sending large attachments you may need to change the initialisation string to **AT&F&K4**. To do this, on the System screen, press **Ctrl + S** or tap the **Control panel** button. Double-tap the **Modems** icon. Make sure the **Current modem** line is set to **Infrared mobile phone** and press **Ctrl + E** or tap the **Edit** button. On the **Initialisation** page, change the **Init. (reset) string** line to **AT&F&K4** and press **Enter** or tap the **OK** button. On the **Advanced** page, change the **Flow control** line to **Software (XON/XOFF)**. Then press **Enter** or tap the **OK** button again to confirm.

## Testing your Internet connection with Web

1. Start up the web browser by tapping on the **Web** icon on the **Extras** bar. On the Series 7 you can tap the **Web** icon on the right-hand icon bar.
2. Type in a web site address and press **Enter** or double-tap on one of the links on the home page.

3. In the **Connect to Internet** dialog make sure that the **Location** line is set to **Mobile**, the **Internet service** line is set to your ISP and the **Modem** line is set to the name of the modem you have setup then tap the **OK** button or press **Enter**.



Typical Network login time is 20-30 seconds and typical download time for Psion's home web page ([www.pSION.com](http://www.pSION.com)) is about 2 minutes, this being dependent on having good cellular coverage and high signal level.

**Note:** If you see an **Access Denied** dialog, this is most likely because you have not switched the Remote Link off, or because the Comms application is running. To remedy the solution, check that the Remote Link is off as shown above, then press **Shift + Ctrl + E** to exit all open applications.

## Notes regarding other Infrared services:

1. You cannot send or receive SMS messages on the Series 5 via Message Suite
2. You cannot send calendar/contact information over Infrared to the Series 5 via Message Suite
3. There is a third party software solution that allows you to have Phone Book management capabilities over infrared found at <http://www.steveg.dircon.co.uk/>
4. You cannot use Faxback services that require you to switch between a voice call and fax call without redialling.